



**NATAL  
PROPERTY  
CONSULTANTS**

THE AGENTS ON THE BALL



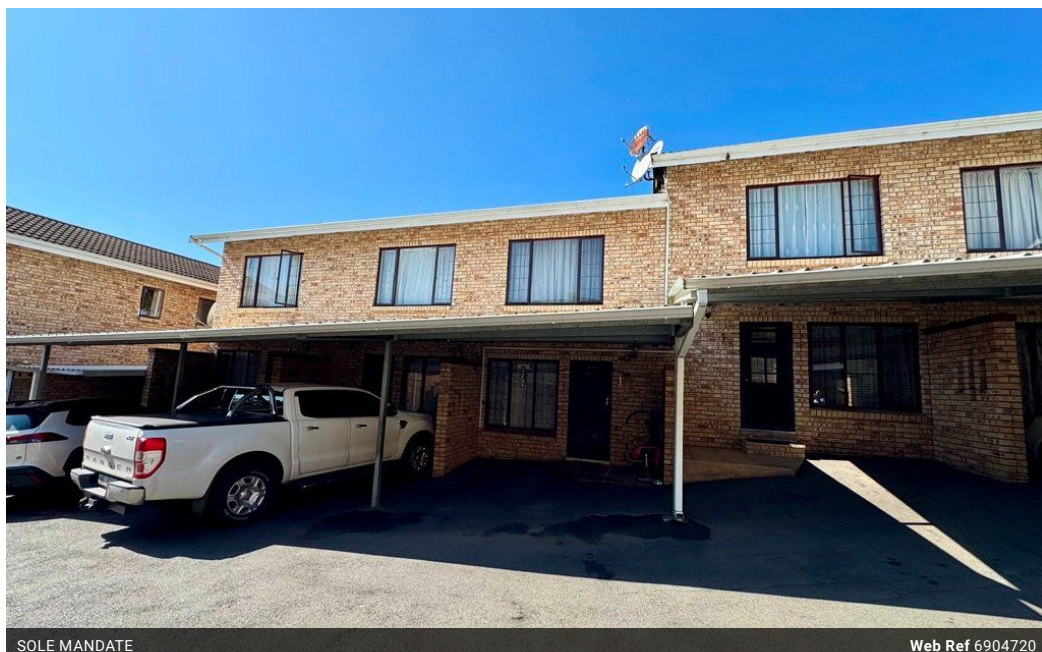
**Paul Campbell**  
0827824180  
pcampbell@natalproperty.co.za

Contact Pietermaritzburg

033 3451515

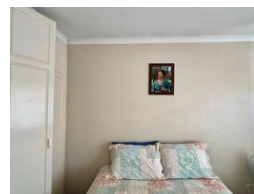
Property House  
78 Commercial Road (78 Chief Albert Luthuli  
Road)  
Pietermaritzburg  
3201

2 Bedroom Flat For Sale in Scottsville



SOLE MANDATE

Web Ref 6904720



R765,000

2 1.5

**Monthly Bond Repayment** R7,896.24  
Calculated over 20 years at 11% with no deposit.

**Transfer Costs** R25,898.00 **Bond Costs** R19,565.00  
These calculations are only a guide. Please ask your conveyancer for exact calculations.

**Monthly Levy** R910 **Monthly Rates** R900

### Neat 2-Bedroom Duplex for Sale in Scottsville

Conveniently located near Woodburn Shopping Centre and major transport routes, this 2-bedroom duplex offers the perfect blend of comfort and accessibility.

Upstairs, you'll find two bedrooms and a bathroom, providing a private and peaceful retreat. The open-plan kitchen flows seamlessly into the lounge area, creating a welcoming space for everyday living. For added convenience, there's a guest loo downstairs.

Step outside to a private courtyard—ideal for outdoor relaxation. The unit also includes a dedicated carport for secure parking.

Set in a very neat and well-maintained complex, this property is perfect for first-time buyers, young professionals, or investors.

Don't miss out—contact me today to arrange a viewing!

### Features

Interior		Exterior		Sizes	
Bedrooms	2	Carports / Parkings	1	Floor Size	71m <sup>2</sup>
Bathrooms	1.5	Security	Yes		
Kitchens	1	Pool	No		
Recep. Rooms	1				