



**NATAL  
PROPERTY  
CONSULTANTS**

THE AGENTS ON THE BALL



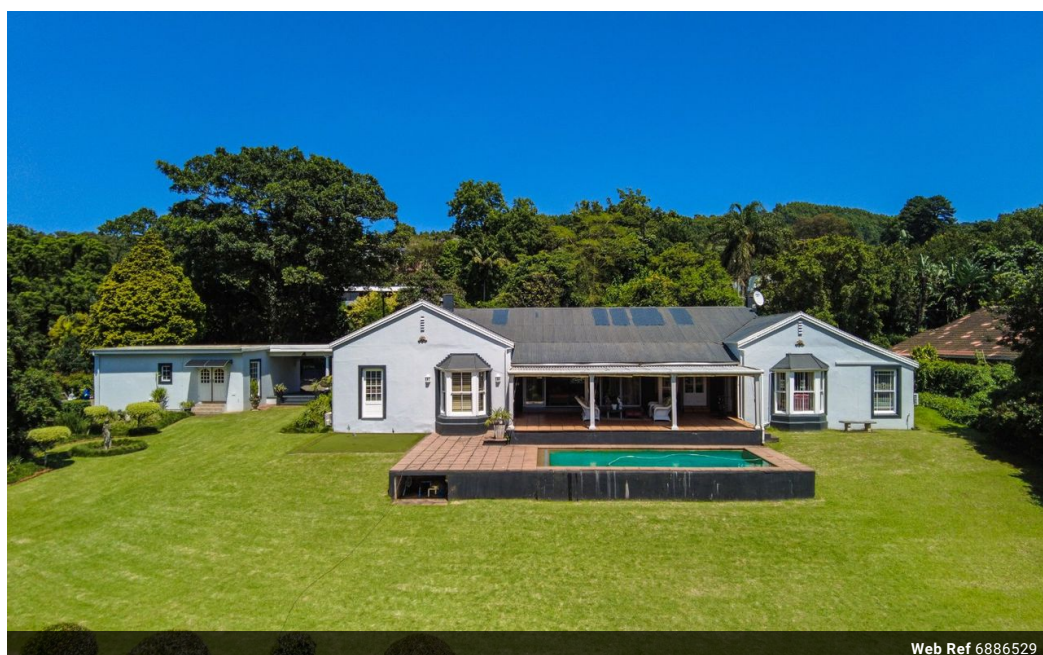
**Bruce Campbell**  
083 226 2015  
bruce@natalproperty.co.za

Contact Pietermaritzburg

033 3451515

Property House  
78 Commercial Road (78 Chief Albert Luthuli  
Road)  
Pietermaritzburg  
3201

4 Bedroom House For Sale in Wembley



Web Ref 6886529



R3,450,000

4 3 1

**Monthly Bond Repayment** R35,610.50  
Calculated over 20 years at 11% with no deposit.

**Transfer Costs** R216,214.00 **Bond Costs** R47,840.00  
These calculations are only a guide. Please ask your conveyancer for exact calculations.

**Monthly Rates** R4,100

### CHARMING HERITAGE HOME WITH BREATHTAKING VIEWS IN WEMBLEY

Step into a world of timeless elegance with this magnificent character-filled home in the heart of Wembley. Over 100 years old, this grand residence showcases the beauty of a bygone era, featuring stunning Oregon pine floors, classic wooden windows, and a warm, inviting ambiance throughout.

Boasting four bedrooms and three bathrooms, this home offers ample space for family living. A study provides the perfect work-from-home space, while two lounges and a formal dining room create an inviting atmosphere for relaxation and entertaining. The well-appointed kitchen, complete with a separate scullery, makes daily living a breeze.

Outside, the beautiful garden provides a private sanctuary, offering spectacular views over the city. A sparkling swimming pool is the centerpiece of this stunning outdoor space, complemented by a...

### Features

Interior		Exterior		Sizes	
Bedrooms	4	Garages	1	Land Size	369m <sup>2</sup>
Bathrooms	3	Security	Yes		
Kitchens	1	Dom. Accom.	1		
Recep. Rooms	5	Pool	No		
Studies	1				